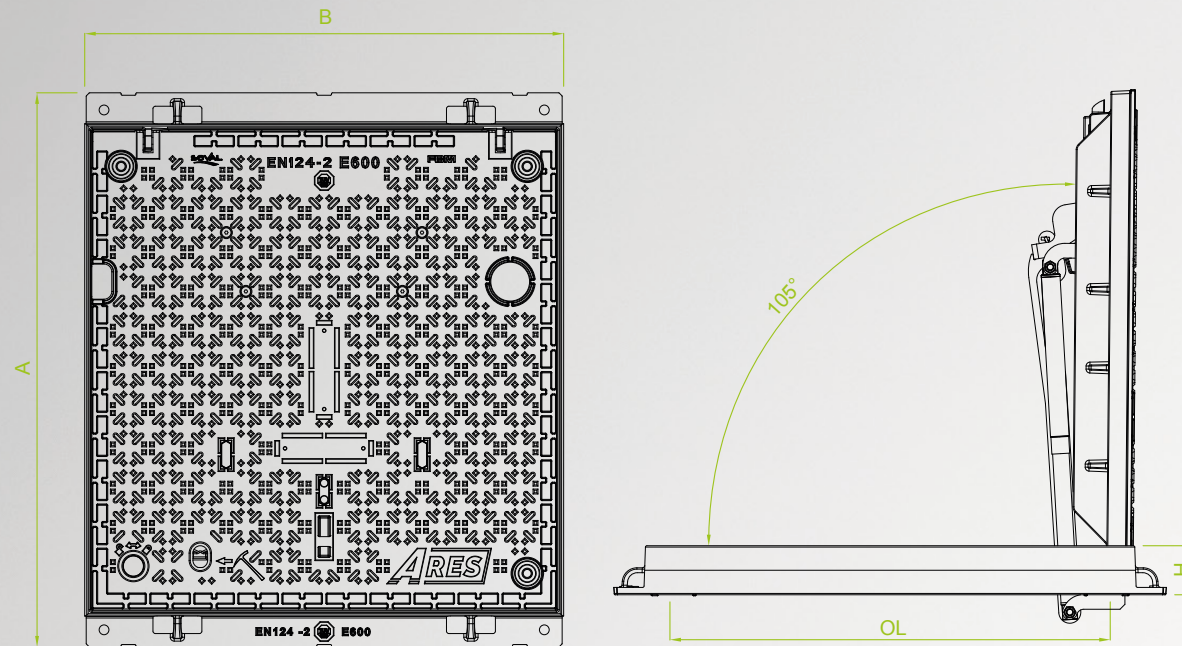
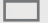
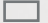


# ARES



## MULTI-NETWORK MANHOLE COVER

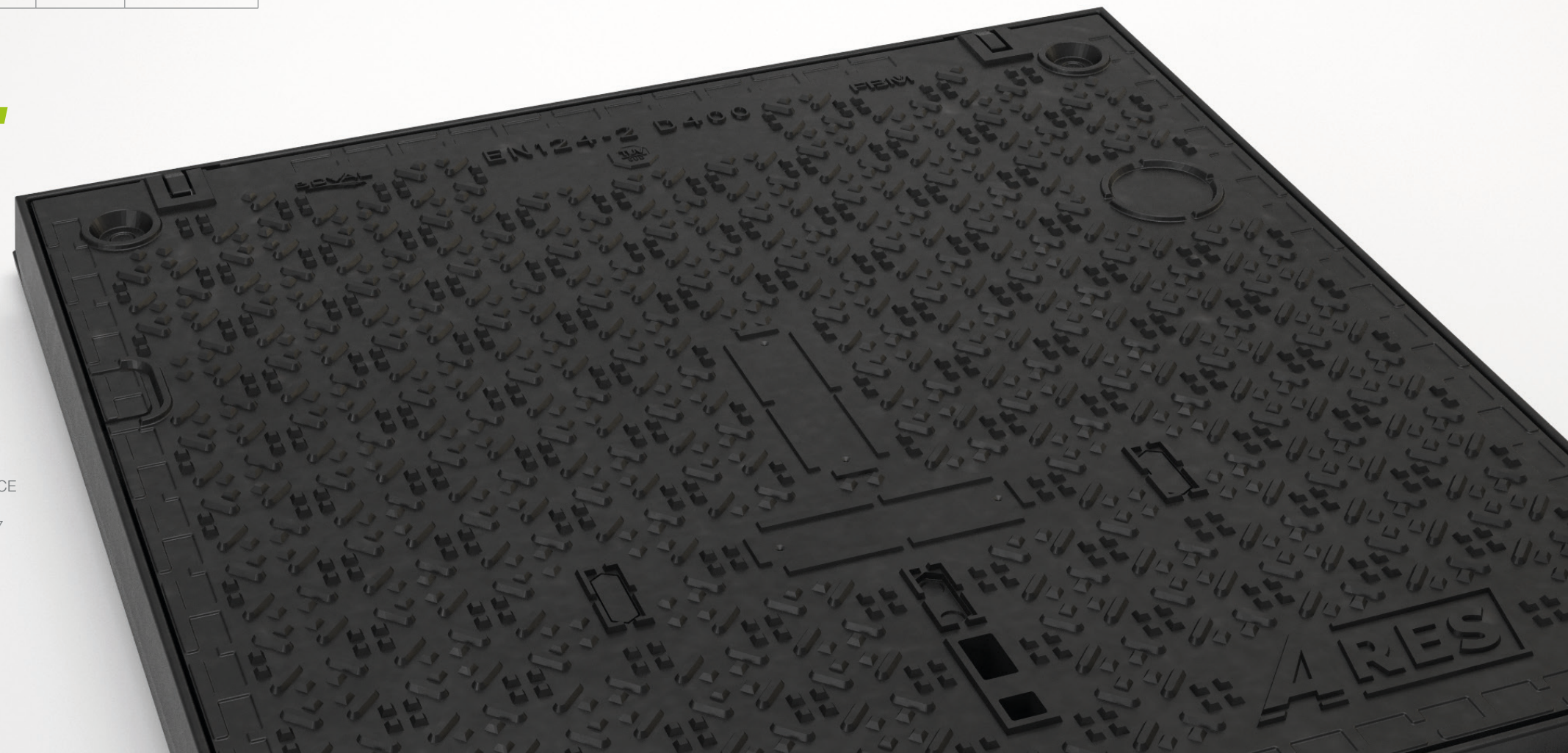


Type of manhole	Class	Lay-out	Clear opening	A*	B*	H*	Weight of whole unit
				mm			Kg
ARES	D400		900 x 900	1130	980	102	224
	E600		900 x 900	1130	980	102	224

I LAGER

BESTÄLLNINGSVARA

\*External frame dimensions.



# ARES

**SOVAL**  
export

**SOVAL HEAD OFFICE**  
1, rue des Fonderies  
52130 Brousseval  
email : [soval@soval.fr](mailto:soval@soval.fr)  
Tel : +33 (0)3 25 56 74 74

Made in  
**FRANCE**



**SOVAL EXPORT**  
1, rue des Fonderies  
52130 Brousseval, FRANCE  
email : [export@soval.fr](mailto:export@soval.fr)  
Tel : +33 (0)3 25 56 92 27

[www.soval.fr](http://www.soval.fr)



# MULTI-NETWORK MANHOLE COVER



## CARACTERISTICS

Frame and covers in Ductile cast iron.  
Hinged and assisted with stainless steel  
jack covers.  
Locking and unlocking with Elastic bars.



## HANDLING

Opening and handling without special  
tools.



## OPTIONS

Anti theft locking system SAE made by  
Soval.  
Tightness thanks to 4 screws (at each  
corner of the MHC).

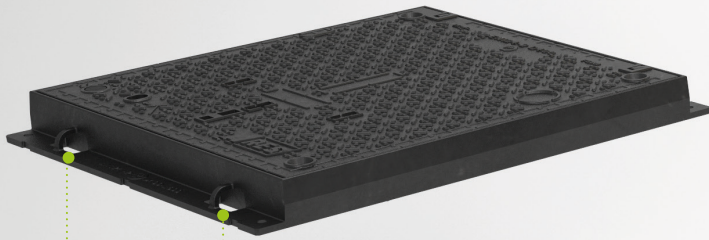


## TÜV CERTIFIED

D400 and E600 class according to the  
EN124-2 standard and Tuv certification.

**ARES**

CLASS D400 AND E600



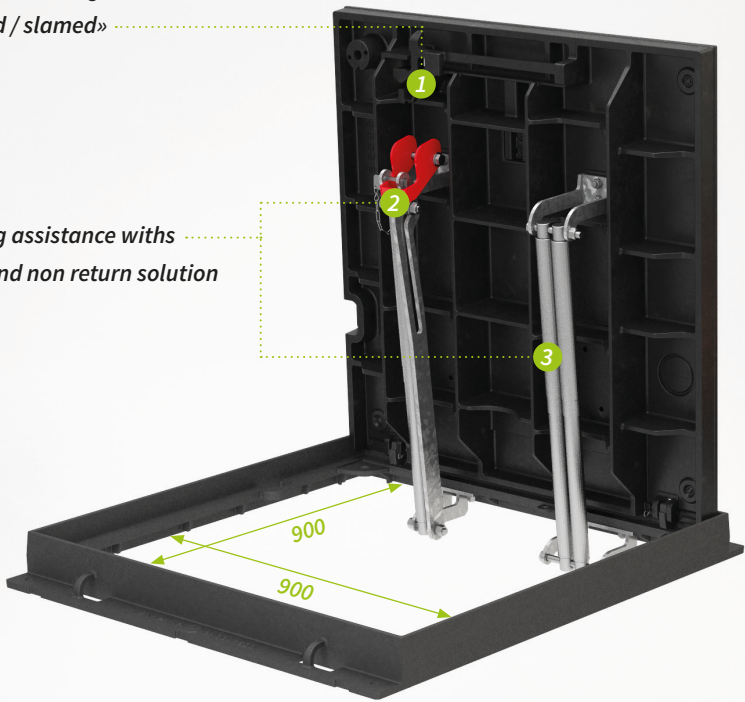
Handling hook  
back and forward



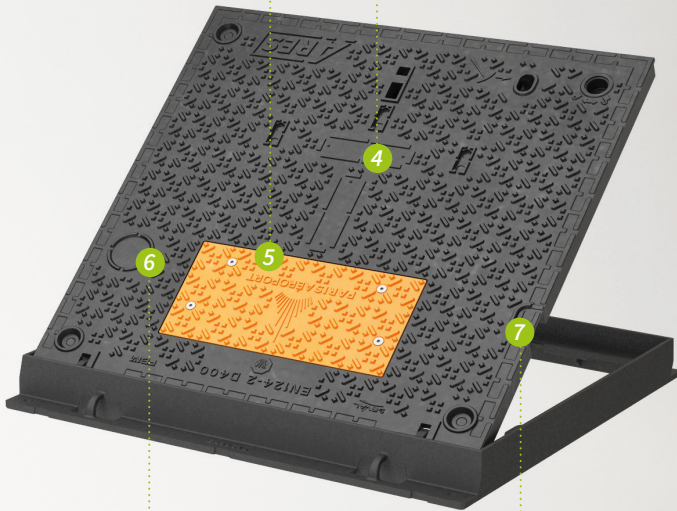
Automatic closing  
«Pushed / slammed»



Opening assistance withs  
Jacks and non return solution



Badging  
area

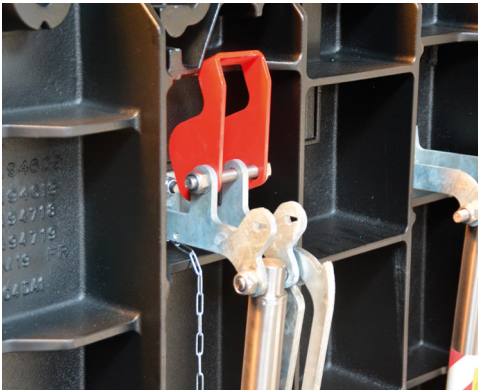


Cable  
pass



## HADLING : SAFETY, ERGONOMICS AND REDUCED EFFORT

Thanks to its system of stainless-steel jacks (springs or gas) ③, its innovative double anti-  
return system and the locking system with elastic bars, ARES ensures **easy handling** and  
**perfect safety** for the maintenance people. Whether opening or closing the operator is never  
above the underground structure.



## AT THE OPENING

• When opened, the **non-return system** ②  
automatically locks itself and prevents the  
cover from being accidentally closed. A  
locking pin adds an **extra level of safety** by  
prohibiting closure.

## AT THE CLOSING

• After removing the locking pin, closing is done  
simply and **effortlessly** by tilting the non-return  
system. With its elastic bar locking system ①,  
the ARES cover **locks automatically**.

# ARES MANHOLE COVER TOTAL SAFETY

## VISIBILITY AND ERGONOMICS

ARES is designed to meet all network configurations and has **several customizable areas** on request (networks, logos, coats  
of arms ...).

• 1 badging area for customization of 450  
x 250 mm ⑤ by embossing on the cover  
or with an **inserts plate** made of cast iron  
(color choice).



• 2 badging zones are available for a  
customization of 180 x 40 mm ④ 4 by  
the addition of **stainless steel warning  
signs**.



• 2 dedicated **cable-pass** zones ⑥ ⑦  
are pre-equipped on the ARES cover and can  
be quickly activated by a **removable plate**  
in cast iron.

