



ERMATIC

ER9G100045

CHANNEL GRATING

Class F900
EN124-2 : 2015
EN GJS 500-7 Iron
ISO 1083 / EN1563

DESIGN FEATURES :

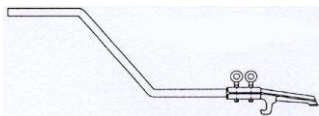
- **Material(s) :**
SG Iron 500-7
ISO 1083 / EN1563
- **Design load :**
900 kN to EN124, Group 6 installation area :
areas imposing particularly high wheel loads,
e.g. aircraft pavements, and lower groups.
- **Coating :**
All the parts other than machined or in
contact with the rebate concrete are covered
with a non toxic waterbased black paint.
- **Product Certification :**
KITEMARK

SPECIAL FEATURES :

- **Mass :**
Grating : 115 kg.
Product total : 170,892 kg.
- **Surface finish :**
Smooth flat finish without raised pattern.
- **Frame type :**
Rectangular by screw/nuts and aluminium
seal coupling.
Depth : 125 mm
- **Grating type :**
Flat grating.
- **Waterway :**
Grating waterway : 2038 cm²
- **Frame bearing pressure :**
 $p \leq 7.5 \text{ N/mm}^2$.
- **Securing of cover/grating within frame :**
By design specific features.
Depth of insertion : $e = 80 \text{ mm}$.
- **Seatings ensure non-rock stability and
silence :**
The oblique and horizontal faces of the
frame and the covers are machined in order
to obtain a metal on metal contact between
seatings with a 0.2mm tolerance.

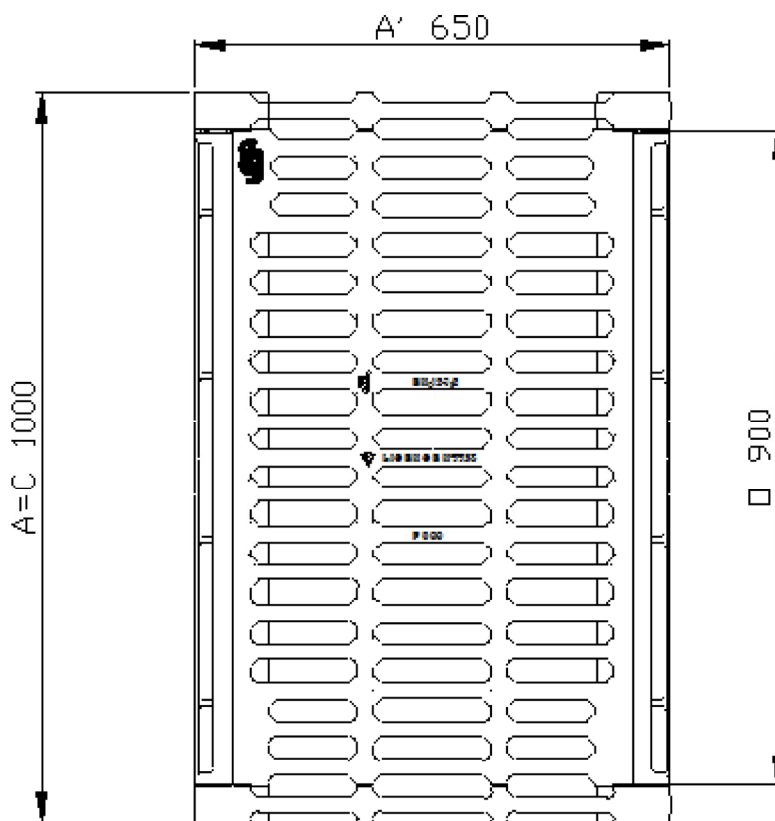
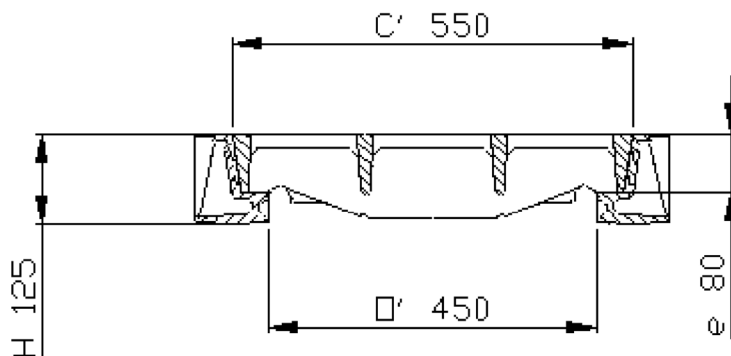
HANDLING :

Easy covers displacement on slides,
excluding total uprising thanks to EM keys,
and protecting the machined faces.
ERMATIC "EM" key : ergonomics ensuring
safety and handling effort reduction (sold
separately).



CIVIL ENGINEERING :

See intallation recommendations : ndp



- Weights (kg), dimensions (mm), and drawings provided for your guidance.
- We reserve the right to modify specifications without prior notice.
- Uncontrolled distribution.

CONFIDENTIAL
Property of EJ EMEA
Not to be used without permission.

EJ
ZI De Marivaux | Saint-Crépin Ibouvillers |
BP50409 | 60544 Méru Cedex | France

ISO 9001 - ISO 14001 - ISO 45001 - ISO 50001

ejco.com

Data sheet :
FT_513157
Date updated :
21.11.2019
Printed : 11.12.2019