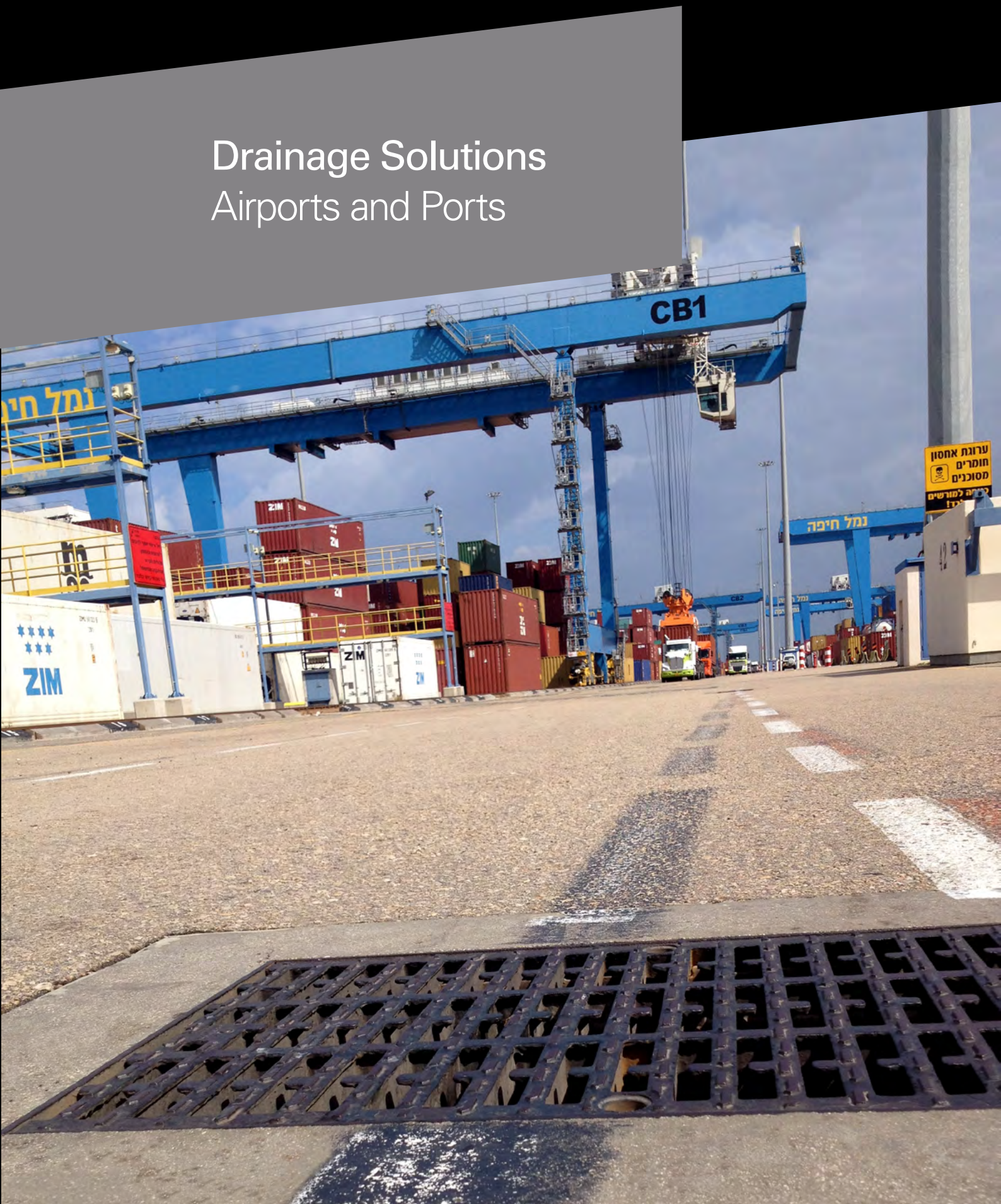




Drainage Solutions Airports and Ports

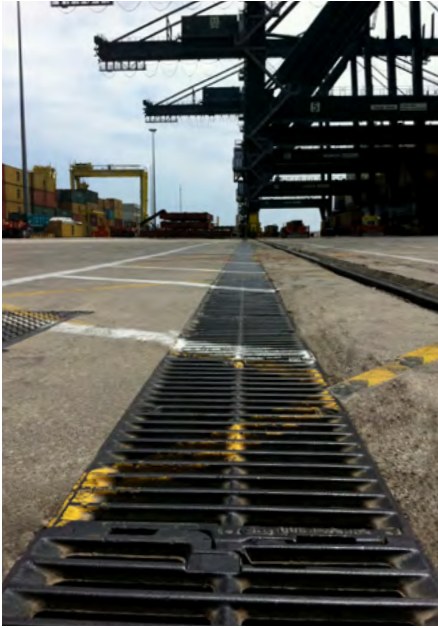


Airports and Ports Drainage Solutions F900 Extra heavy duty

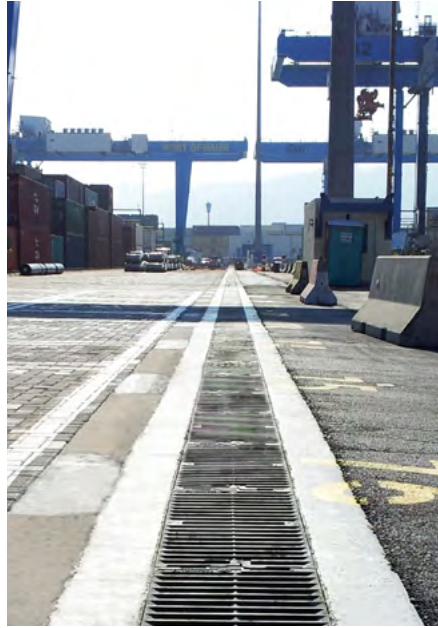


- **Linear duct and stand alone grating**
- **Large catch flow efficiency**
- **High wheel load resistance**
- **Secured access**
- **Third party certification**

They trust EJ: 135 years of expertise



Port of Valencia, Spain



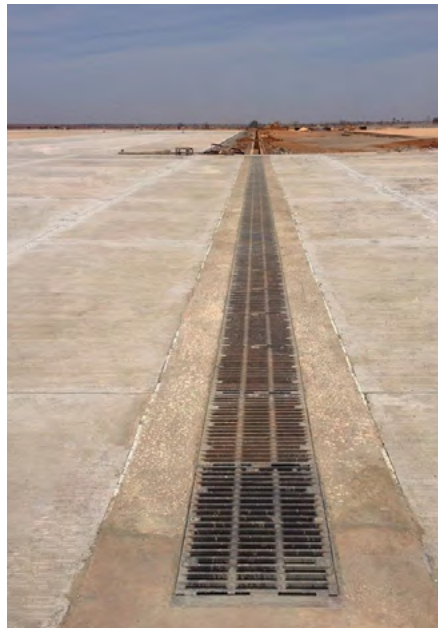
Port of Haifa, Israel



Port of Bilbao, Spain



Venice Airport, Italy



Dakar Airport, Senegal



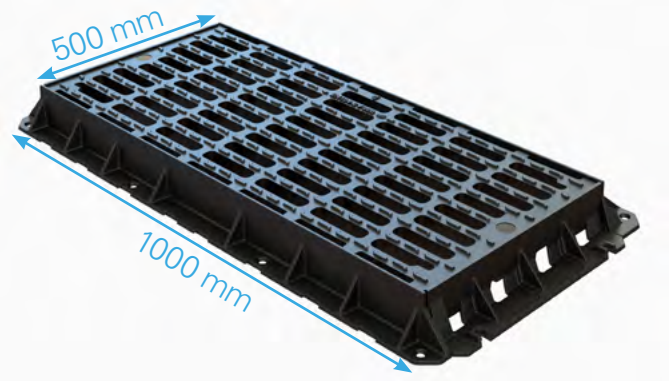
Cali Airport, Colombia

Linear duct gratings F900 Extra heavy duty

Specifications

CA05110 FVL + END BARS

c/o 500 x 1000 mm



- Spheroidal graphite cast iron grating and frame according to ISO 1083 Grade 500-7 and EN1563
- Class F900 according to standard EN124: 2015
- NF certified by third party AFNOR
- Coating is black water-soluble paint, non-toxic, non-flammable and non-polluting
- Frame bars incorporate :
 - spigot feature for additionnal ease of installation
 - 2 holes Ø14 mm to dowel if necessary
 - room for levelling screw kit to avoid shimming
- Grating bolted down to frame bars by means of 2 HM12x60 zinc coated steel screws + lock washers
- Plugs provided for holes
- Innovative bar design to provide maximum water drainage*
- Pair of end bars

CA1055 FVL + END BARS

c/o 1000 x 450 mm



Levelling screw kit

product reference	item code	overall size length x width (mm)	clear opening (mm)	frame height (mm)	Frame bar support width (mm)	waterway cm2	catch flow efficiency L/s 50mm water height longi slope < 2%
CA1040 FVL	532105	1000 x 574	1000 x 300	100	135	1810	120
CA1055 FVL	528251	1000 x 730	1000 x 450	100	135	2012	157
CA1070 FVL	522289	1000 x 880	1000 x 600	100	135	2434	160
CA1085 FVL	538074	1000 x 1028	1000 x 750	100	135	3024	200
CA05110 FVL	546070	528 x 1270	500 x 1000	100	135	2321	153
CA0570 FVL	542401	500 x 880	500 x 600	100	135	1066	71

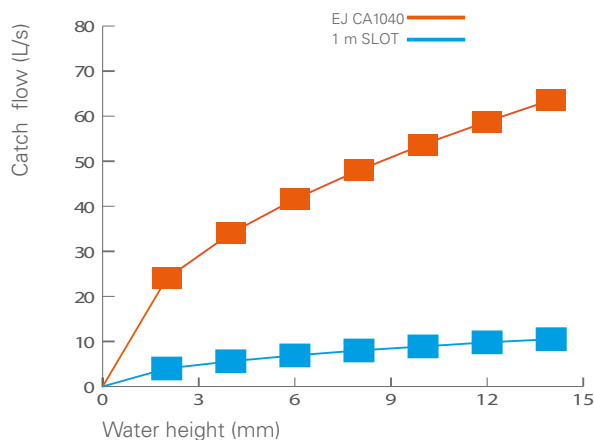
*except for CA05110

Linear duct gratings F900 Extra heavy duty

Performances



The smooth ribs design avoids water turbulence and splashing to maximise the catch flow efficiency*



With a height of 12 mm water, the CA1040FVL by EJ drains 6 times more water than the traditional slot drainage system and guarantees more safety in the event of heavy rainfall

Easy installation



- Prepare rebate and install shuttering.
- Cast quick setting concrete pad to support frame junctions



- Install front bar with brackets and position the first 1 meter unit, joining frame bars
- Check level and alignment



- Follow on with the next unit and connect them to the previous one, interlocking the grating thanks to the spigots
- Install rear bar
- Pack under frame with concrete and backfill rebate



- Ensure the locking screws are closed with a minimum torque of 8 m.kg and open to traffic

Stand alone drainage gratings F900 Extra heavy duty

Specifications

SOLO SFGC - CIRCULAR GRATING AND SQUARE FRAME



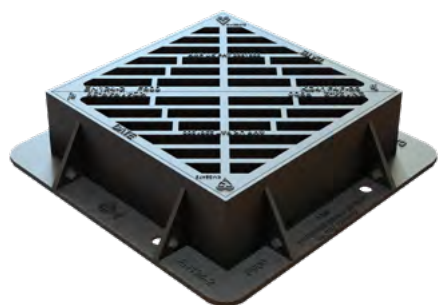
- Spheroidal graphite cast iron according to
- ISO 1083 (type 500-7) and EN1563
- Class F900 according to standard EN124: 2015
- NF certified by third party AFNOR
- Black coating water-soluble paint, non-toxic, non-flammable and non-polluting
- Wide flat chloroprene rubber cushioning insert fixed on the grating
- Security blocking at 90° preventing accidental closure
- Square frame monoblock as cast with Ø 20mm holes to dowel if necessary
- Grating can be removed from the 90° angle

SOLO SFGR - CIRCULAR GRATING AND CIRCULAR FRAME



- Spheroidal graphite cast iron according to ISO 1083 (type 500-7) and EN1563
- Class F900 according to standard EN124: 2015
- Black coating water-soluble paint, non-toxic, non-flammable and non-polluting
- NF certified by third party AFNOR
- Wide flat chloroprene rubber cushioning insert fixed on the grating
- Security blocking at 90° preventing accidental closure
- Circular frame monoblock as cast with Ø 20mm holes to dowel if necessary
- Grating can be removed from the 90° angle

KD41F 4F - DOUBLE TRIANGULAR GRATING AND SQUARE FRAME

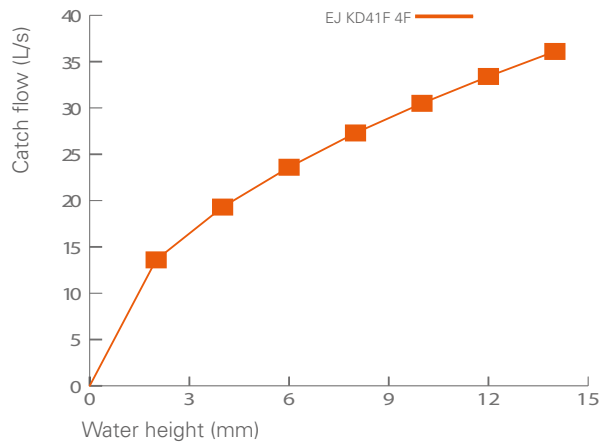


- Ductile iron to ISO 1083
- Manufactured to BS EN124 class F900, 90 tonnes safe test load
- Comply with HA 104 and conform to BS7903
- Black coated finish to BS 3416
- KM certified by BSI Kitemark
- Non rock double triangular design for stability and silence

product reference	item code	overall size length x width (mm)	clear opening (mm)	frame height (mm)	waterway cm2	catch flow efficiency L/s 50mm water height longi slope < 2%
SOLO SFGC	528457	850 x 850	600 ø	100	1020	67
SOLO SFGR	528456	850 ø	600 ø	100	1020	67
KD41F 4F	KD41F 4F	610 x 610	450 x 450	150	1028	68

Stand alone drainage gratings F900 Extra heavy duty

Performances



With a height of 12 mm water and a <2% longitudinal slope the KD41F 4F by EJ drains 33 L/s

Easy installation



- Prepare rebate



- Lower frame in the rebate
- Check level



- Install shuttering and check level
- Fill the rebate up to the finished surface level (-20mm in case of asphalt finish)



- Remove shuttering
- Insert grating and open to traffic



ejco.com



Americas

+1 800 874 4100

EMEA

Europe, Middle East,
Africa and South East Asia

+33 344 08 28 00

Asia-Pacific

+61 73216 5000

EMEA

ZI de Marivaux
60149 Saint Crépin Ibouvillers
France
+ 33 (0) 3 44 08 28 47
emea.airportport@ejco.com

Registered
Trademarks



CAVANAGH®
NORINCO®
TELECOM®
SELFLEVEL®
ERMATIC®
CHILDSAFETY®

DEFENSO®
NORGUSS®
CABLECOM®
NORLONG®
MAXIMO®
AQUERA®

DRAINAGE RANGES
Airports and Ports
EJ© - 01/2019